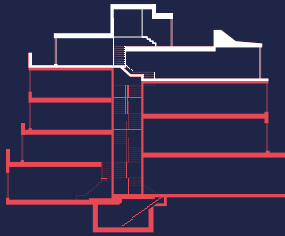




# TWO BEDROOM DUPLEX

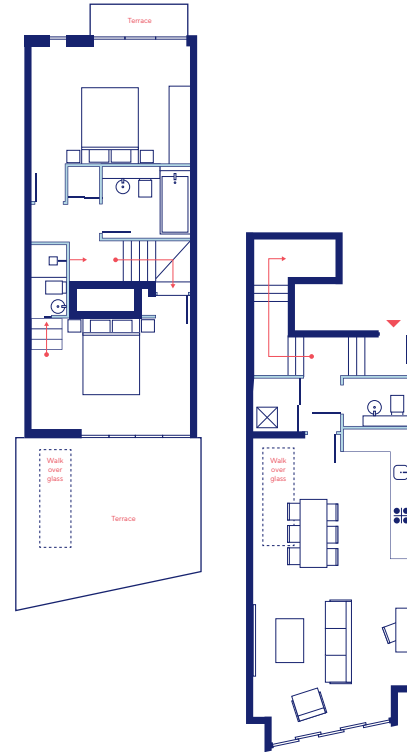


Balham High Road

Kitchen / Living	8.25m x 4.45m	27.1ft x 14.6ft
Bedroom 01	4.45m x 3.95m	14.6ft x 13.0ft
Bedroom 02	4.45m x 3.2m	14.6ft x 10.5ft
Bathroom	2.4m x 1.9m	7.9ft x 6.2ft
Third Floor Cloak Room	1.85m x 1.25m	6.1ft x 4.1ft
Third Floor Store	1.4m x 1.4m	4.6ft x 4.6ft
Fourth Floor Store	1.1m x 0.85m	3.6ft x 2.8ft
Bedroom 01 Terrace	4.55m x 4.45m	14.9ft x 14.6ft
Bedroom 02 Terrace	2.6m x 1.6m	8.5ft x 5.2ft
<b>Total Area</b>	<b>90.9m<sup>2</sup></b>	<b>978ft<sup>2</sup></b>

180

# APT 05



THIRD / FOURTH FLOOR

180