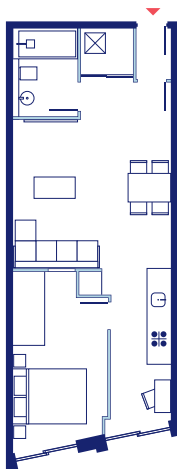




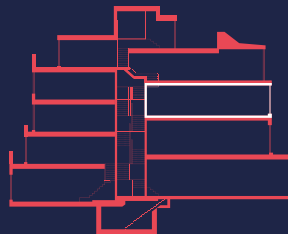
APT 04



SECOND FLOOR



ONE BEDROOM APARTMENT



Balham High Road

Kitchen / Living	8.35m x 4.43m	27.4ft x 14.5ft
Bedroom	5.55m x 2.5m	18.2ft x 8.2ft
Bathroom	2.25m x 1.72m	7.4ft x 5.6ft
Store	1.5m x 0.75m	4.9ft x 2.5ft
Winter Garden	1.9m x 1.8m	6.2ft x 5.9ft
Total Area	46.2 m²	497ft²